

COMMUNITY BLOOD TRANSFUSIONS AT NSCH

REFERRAL PROTOCOL



GUIDANCE FOR GENERAL PRACTITIONERS

North Somerset Community Partnership IV Service provides uncomplicated blood transfusions at the Ambulatory Care Unit (ACU) of North Somerset Community Hospital (NSCH). This service is provided in partnership with North Bristol NHS Trust (NBT).

There are a number of important safety criteria which must be considered when evaluating if a patient a suitable candidate for blood transfusion in the community.

The patients GP will retain responsibility for the medical management of the reason for transfusion, including prescribing.

The IV Service are able to help and support this by providing blood sampling for grouping and cross matching, liaising with NBT's Specialist Practitioner of Transfusion, administering the blood / blood product transfusion and providing follow up care including repeat blood testing, where necessary.

1	CONFIRM PATIENT \geq 18 YEARS OLD AND REGISTERED WITH NORTH SOMERSET GP	
2	INDICATION FOR TRANSFUSION	Refer to UHB/NBT Blood Component Transfusion Guide 2017 ¹ If newly identified anaemia, ensure pathway followed (see over)
3	IDENTIFY SYMPTOMS/SIGNS	eg breathlessness, fatigue,
4	ACUTE BLEEDING EXCLUDED	Patient must be medically stable to receive community transfusion
5	HAEMOGLOBIN LEVELS	Pre-transfusion Hb (g/L) and target Hb (g/L) must be known
6	PREVIOUS SUCCESSFUL TRANSFUSION	Patients must have received \geq 1 transfusion in an acute with no severe acute transfusion reaction (mild / moderate)
7	BLOOD PRODUCT REQUIRED	Currently only red cell transfusion can be administered at NSCH
8	CALCULATE PRESCRIPTION	Assume an increment of 10g/L per unit for an average 70 kg adult Use the minimum number of units required to achieve target Hb
9	EXCLUDE TACO RISK	See below
10	REFER TO NSCP IV SERVICE	07500 225 283 [08:30-22:00hrs]
11	COMPLETE BLOOD REQUEST FORM	Use location code "NSCH" to ensure blood is delivered to hospital
12	ARRANGE CROSSMATCHING	Must be completed by NSCP IV Service staff
13	COMPLETE PATIENT SPECIFIC DIRECTION	Contact IV Service for advice as required

FOR ADVICE OR GUIDANCE CONTACT: NSCP IV SERVICE 07500 225 283 / 01275 546 992
NBT SPECIALIST PRACTITIONER OF TRANSFUSION 07718 575 469 / 0117 414 8358

SHOT

Serious Hazards Of Transfusion

TRANSFUSION ASSOCIATED CARDIAC OVERLOAD (TACO) RISK ASSESSMENT²

TACO Checklist	Red cell transfusion for non-bleeding patients	If 'yes' to any of these questions
	Does the patient have a diagnosis of 'heart failure' congestive cardiac failure (CCF), severe aortic stenosis, or moderate to severe left ventricular dysfunction? Is the patient on a regular diuretic?	<div style="display: flex; flex-direction: column; align-items: center; justify-content: center;"> <div style="background-color: #c00; color: white; padding: 10px; margin: 5px;">1</div> <div style="background-color: #c00; color: white; padding: 10px; margin: 5px;">2</div> <div style="background-color: #c00; color: white; padding: 10px; margin: 5px;">3</div> </div> <ul style="list-style-type: none"> Review the need for transfusion (do the benefits outweigh the risks)? Can the transfusion be safely deferred until the issue can be investigated, treated or resolved? Consider body weight dosing for red cells (especially if low body weight) Transfuse one unit (red cells) and review symptoms of anaemia Measure the fluid balance Consider giving a prophylactic diuretic Monitor the vital signs closely, including oxygen saturation
	Is the patient known to have pulmonary oedema? Does the patient have respiratory symptoms of undiagnosed cause?	
	Is the fluid balance clinically significantly positive? Is the patient on concomitant fluids (or has been in the past 24 hours)? Is there any peripheral oedema? Does the patient have hypoalbuminaemia? Does the patient have significant renal impairment?	

CONSIDER REFERRAL TO ACUTE

¹ [https://www.nbt.nhs.uk/sites/default/files/Clinical Indications for Transfusion.pdf](https://www.nbt.nhs.uk/sites/default/files/Clinical%20Indications%20for%20Transfusion.pdf)

² <https://www.shotuk.org/wp-content/uploads/18b.-Transfusion-Associated-Circulatory-Overload-TACO.pdf>

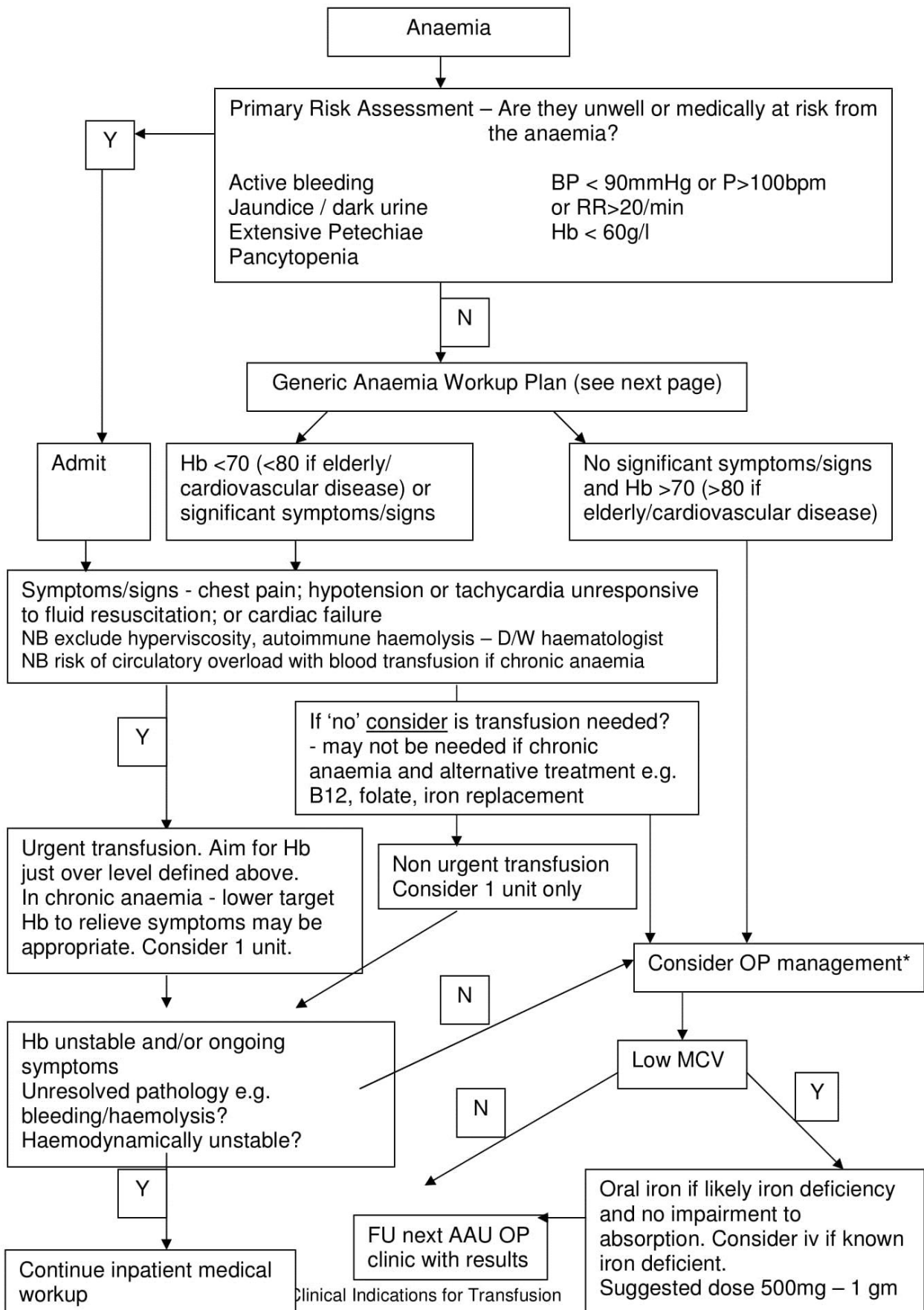
COMMUNITY BLOOD TRANSFUSIONS AT NSCH

REFERRAL PROTOCOL



Appendix 1

Medical Pathway for Newly Identified Anaemia



¹ [https://www.nbt.nhs.uk/sites/default/files/Clinical Indications for Transtfusion.pdf](https://www.nbt.nhs.uk/sites/default/files/Clinical%20Indications%20for%20Transtfusion.pdf)

² <https://www.shotuk.org/wp-content/uploads/18b.-Transfusion-Associated-Circulatory-Overload-TACO.pdf>